



Nature-based solutions & impact investments

Bo Øksnebjerg
Secretary general, WWF Denmark





Something is terribly
wrong with our planet



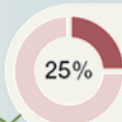


EXAMPLES OF DECLINES IN NATURE



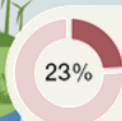
ECOSYSTEM EXTENT AND CONDITION

Natural ecosystems have **declined by 47 per cent** on average, relative to their earliest estimated states.



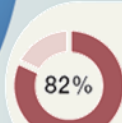
SPECIES EXTINCTION RISK

Approximately **25 per cent of species are already threatened with extinction** in most animal and plant groups studied.



ECOLOGICAL COMMUNITIES

Biotic integrity — the abundance of naturally-present species — has **declined by 23 per cent** on average in terrestrial communities.*



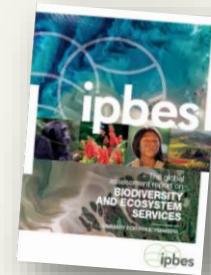
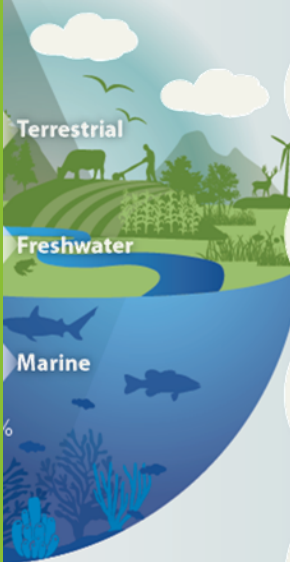
BIOMASS AND SPECIES ABUNDANCE

The global biomass of wild mammals has **fallen by 82 per cent.*** Indicators of vertebrate abundance have declined rapidly since 1970



NATURE FOR INDIGENOUS PEOPLES AND LOCAL COMMUNITIES

72 per cent of indicators developed by indigenous peoples and local communities show **ongoing deterioration** of elements of nature important to them



UN IPBES expert panel

One million species threatened with extinction



WWF



70%

OF GLOBAL BIODIVERSITY
LOSS AND HALF OF
DEFORESTATION IS CAUSED
BY CONVERSION INTO
AGRICULTURE



75%

OF THE EARTH'S ICE-FREE
SURFACE IS SIGNIFICANTLY
CHANGED BY HUMAN
ACTIVITY



90%

**OF THE WORLD'S FISH
STOCKS ARE OVERFISHED OR
UTILIZED TO THEIR LIMITS**



We have one planet



not 1.7 ...



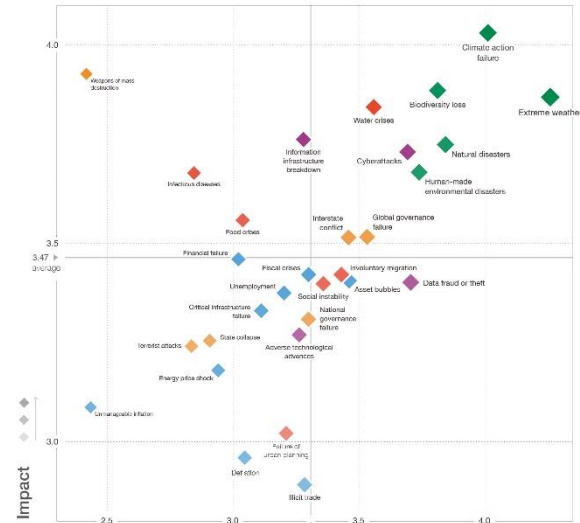
Denmark use resources like we have 4.2 planets ...





Should we worry?

Figure II: The Global Risks Landscape 2020



Likelihood

Top 10 risks in terms of Likelihood

- Extreme weather
- Climate action failure
- Natural disasters
- Biodiversity loss
- Human-made environmental disasters
- Data fraud or theft
- Cyberattacks
- Water crises
- Global governance failure
- Asset bubbles

Top 10 risks in terms of Impact

- Climate action failure
- Weapons of mass destruction
- Biodiversity loss
- Extreme weather
- Water crises
- Information infrastructure breakdown
- Natural disasters
- Cyberattacks
- Human-made environmental disasters
- Infectious disease

Categories

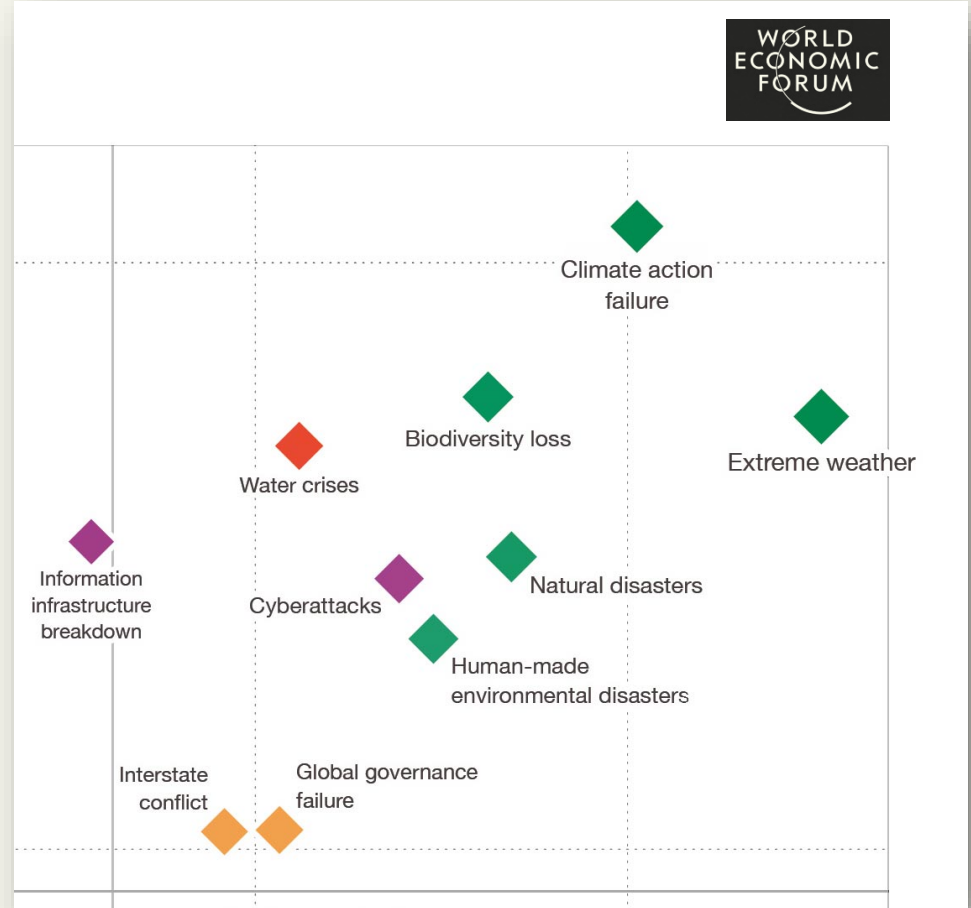
- Economic
- Environmental
- Geopolitical
- Societal
- Technological

Source: World Economic Forum Global Risks Perception Survey 2019-2020.

Note: Survey respondents were asked to assess the likelihood of the individual global risks on a scale of 1 to 5, 1 representing a risk that is very unlikely to happen and 5 one that is very likely to occur. They also assessed the impact of each global risk on a scale of 1 to 5, 1 representing a minimal impact and 5 a catastrophic impact. The size of the bubbles is proportional to the number of respondents who selected a particular risk and direction.



The World Economic Forum says "Yes!"



Source: World Economic Forum Global Risk Report 2020



World Economic Forum:

But ... There is also immense potential

”

A new nature positive economy can generate US\$ 10.1 trillion in annual business value and create 395 million jobs by 2030





WWF




50%

OF THE WORLD'S
GDP DEPENDS
ON NATURE

A vibrant underwater scene showing a diverse coral reef. The foreground is dominated by large, branching coral structures in shades of red, orange, and yellow. Numerous small, bright orange fish are swimming throughout the water column, and several larger black and white fish are also visible. The background is a clear, deep blue sky.

Coral reefs protects fish fry, attracts larger fish and protects the coast from storms and flooding

A lush, dense tropical forest scene. The image is filled with various types of green foliage, including large broad leaves, ferns, and thick, moss-covered tree trunks. Sunlight filters through the canopy, creating a dappled light effect on the forest floor.

Forests absorbs and stores carbon, controls the water cycles, supplies food and regulates climate



Initiative



Protect



Restore



Manage



Societal gains



Climate mitigation



Access to water



Improved health



Food security



Financial and social development



Protect nature and biodiversity



Fewer natural disasters



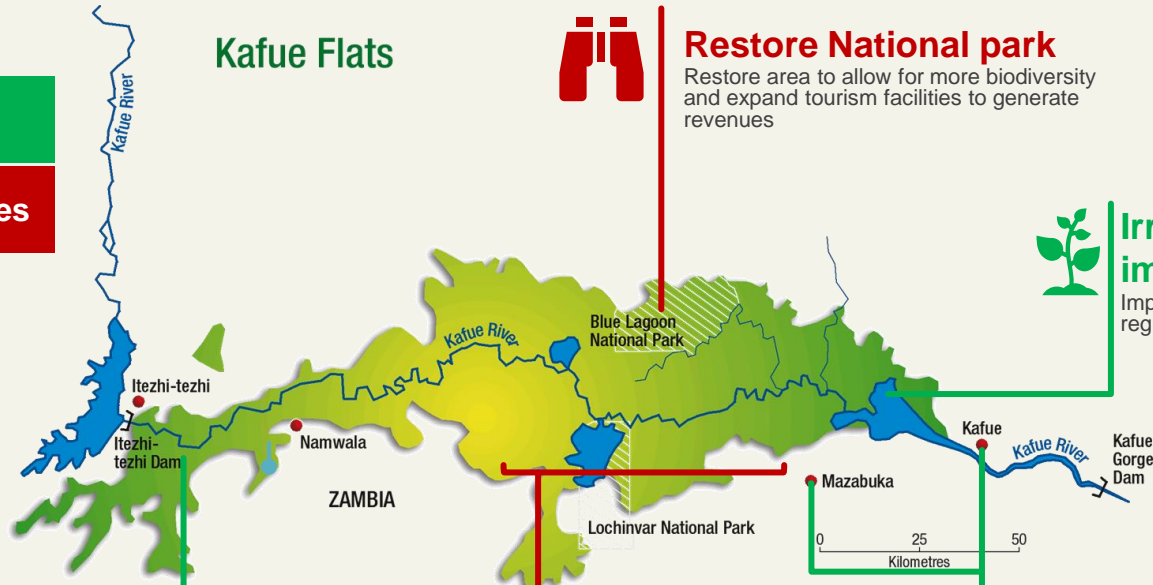
Water scarcity is affecting a quarter of world's population
and could displace 700 million people by 2030



Cleaner and more water
- ROI in just eight months



Bankable
Grants/Subsidies



Kafue Flats



Restore National park

Restore area to allow for more biodiversity and expand tourism facilities to generate revenues



Irrigation improvement

Improve irrigation system and regulate water



Water treatment system

Reduce water pollution and treat water from cities



Fish processing plant

Reduce harvesting of juvenile bream to maintain sustainable fish population. Provide local fisheries with the opportunity to increase their price point

Manage Cattle Farming



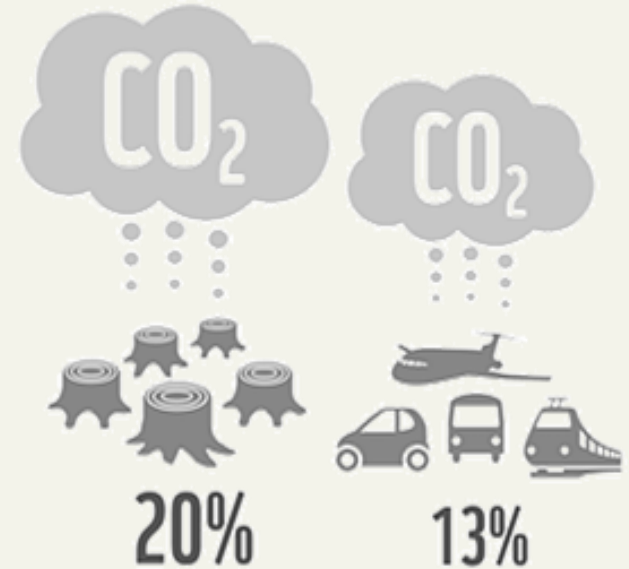
Reduce pressure of cattle farming and use smart grazing management to allow vegetation of Flats to grow



Protection and restoration of forests must secure 25 %
of the CO₂-capture and storage needed by 2050



Deforestation is accountable for
20 % of the world's CO₂ emissions





Working together to capture the VELUX Group's historical CO₂ through forest conservation

VELUX

Nature-based adaptation and carbon storage in Uganda





The challenge is we
think we have time





Huge conservation investment gap

CONSERVATION INVESTMENT GAP

Current Annual Investment

Finance gap



Required Annual Investment

SDG INVESTMENT GAP





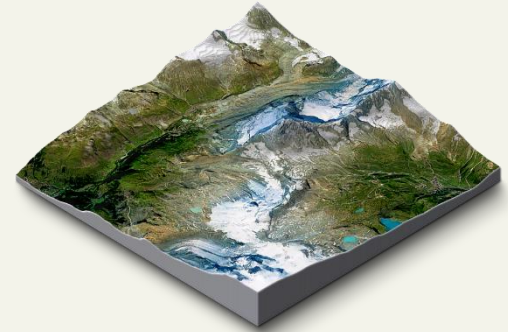
What it takes



Local
presence



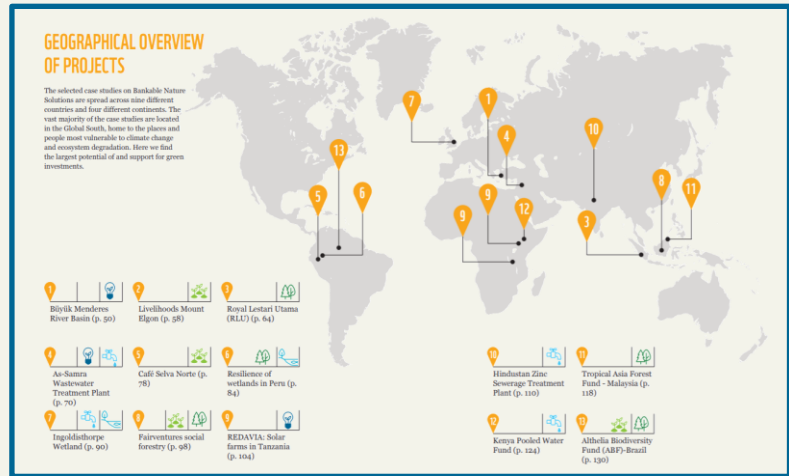
Seed
funding



Landscape
management plan



Public money speeds up private investments





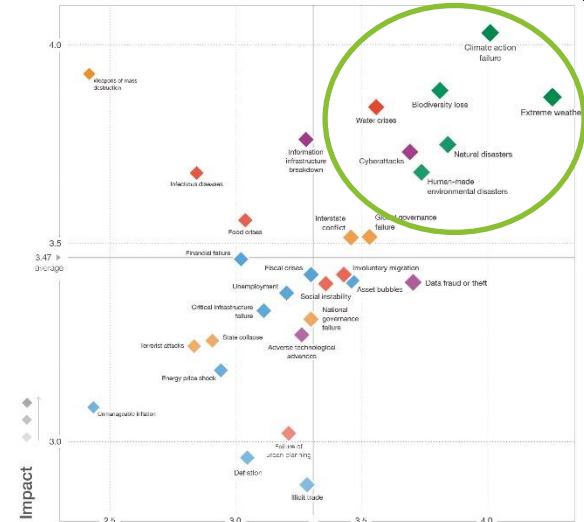
Supporting the most challenged SDG's and mitigating the largest risks



Kilde: World Economic Forum Global Risk Report 2020



Figure II: The Global Risks Landscape 2020



Likelihood

Top 10 risks in terms of Likelihood

- Extreme weather
- Climate action failure
- Natural disasters
- Biodiversity loss
- Human-made environmental disasters
- Data fraud or theft
- Cyberattacks
- Water crises
- Global governance failure
- Asset bubbles

Top 10 risks in terms of Impact

- Climate action failure
- Weapons of mass destruction
- Biodiversity loss
- Extreme weather
- Water crises
- Information infrastructure breakdown
- Natural disasters
- Cyberattacks
- Human-made environmental disasters
- Infectious diseases

Categories

- Economic
- Environmental
- Geopolitical
- Societal
- Technological

Source: World Economic Forum Global Risks Perception Survey (2019-2020)

Note: Survey respondents were asked to assess the likelihood of the impact of global risk on a scale of 1 to 5, 1 representing a risk that is very unlikely to happen and 5 indicating that it is very likely to occur. They also assessed the impact of each global risk on a scale of 1 to 5, 1 representing a minimal impact and 5 a catastrophic impact. The size of the bubble represents the likelihood of the global risk as indicated, see appendix for the full numerical data.



Thank you!

Bo Øksnebjerg
Secretary General, WWF Denmark

